

# V8 ROV CLEANING EXAMPLES



## 'Chain (Australia)



*Cleaning Chain prior to 3d Scanning*

## Field Joint (Australia)



*For this application we removed exterior wraps to expose the joint for UT scanning*

# V8 ROV CLEANING EXAMPLES



## HP Water on seawater intake (Ship; NorthWest Shelf/Australia)



*Before cleaning and fitting of water blaster showing almost total coverage of soft growth*



*After about one hour cleaning – Some small amount of hard growth (limpets) and some antifouling coating loss (from cleaning)*

# V8 ROV CLEANING EXAMPLES



## HP Water on Flange to expose vents(NorthWest Shelf/Australia)



*Before cleaning showing almost total coverage of soft growth*



*After partial cleaning – vents are now exposed*

# V8 ROV CLEANING EXAMPLES



## Unused I-Tube (Timor Sea / Australia)



*Prior to Cleaning (13m long tube)*

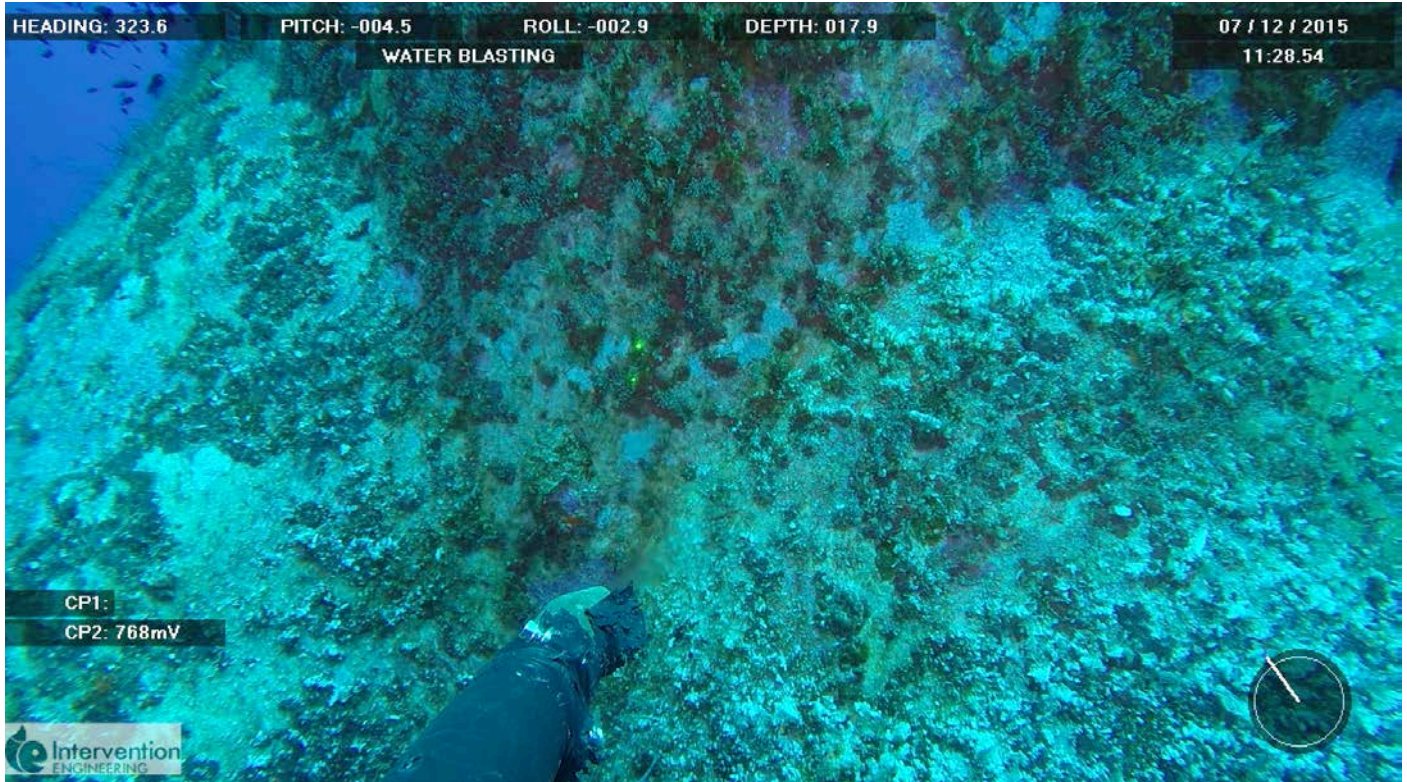


*After Cleaning*

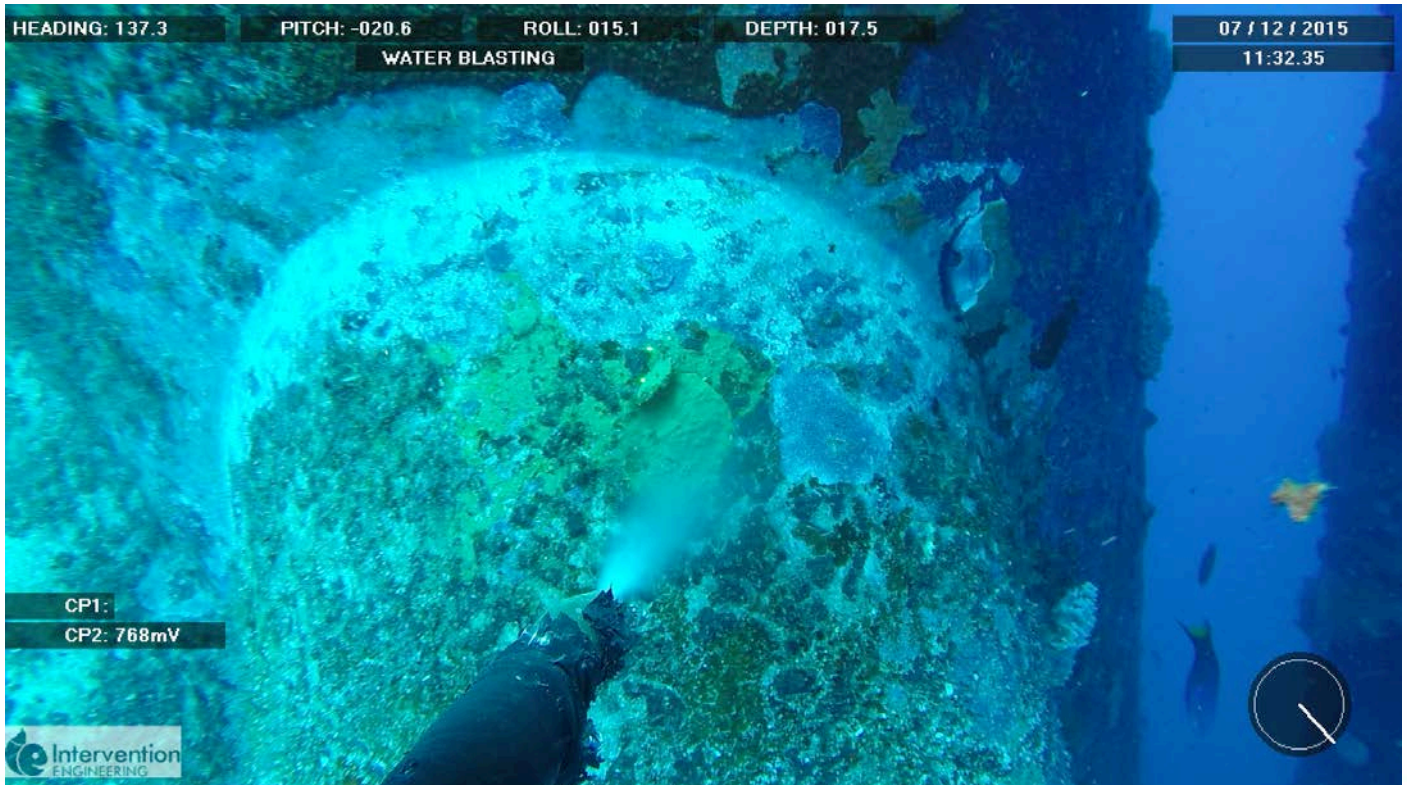
# V8 ROV CLEANING EXAMPLES



## HP Water on Node for CVI (NorthWest Shelf/Australia)



*Preparing to clean a node – for scale, laser dots in centre are 50mm apart*



*Same node, less than 5 minutes later*

# V8 ROV CLEANING EXAMPLES



## Wire Brush on Gusset Weld (Platform; Philippines)



During Cleaning

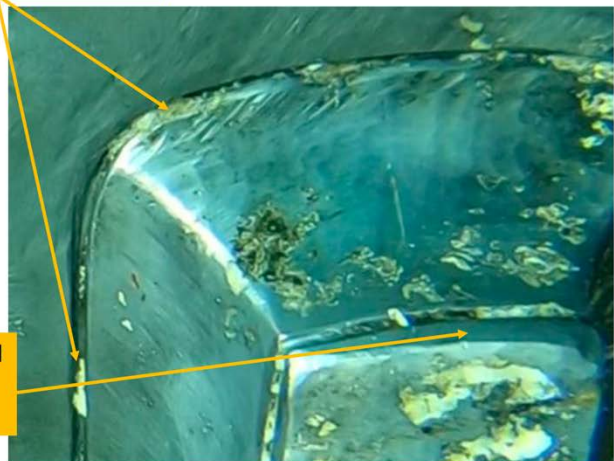


After Cleaning to expose Weld



The profile weld toes should be cleaned of all MG and deposits.

Both HAZ's should be cleaned even though the gusset HAZ is limited in size, at the ends

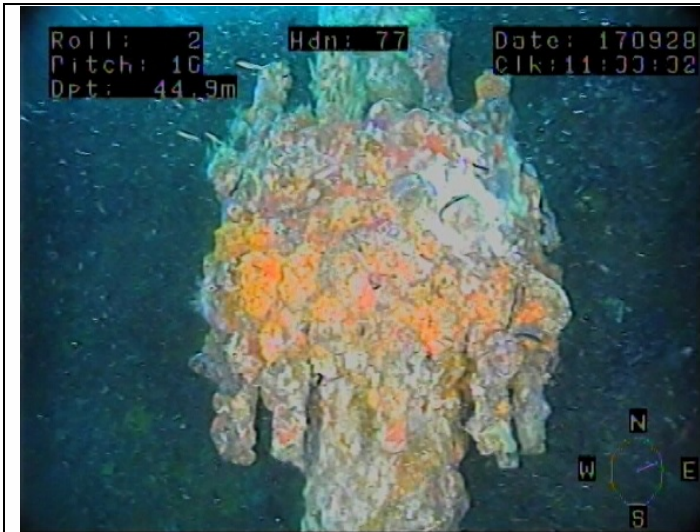


# V8 ROV CLEANING

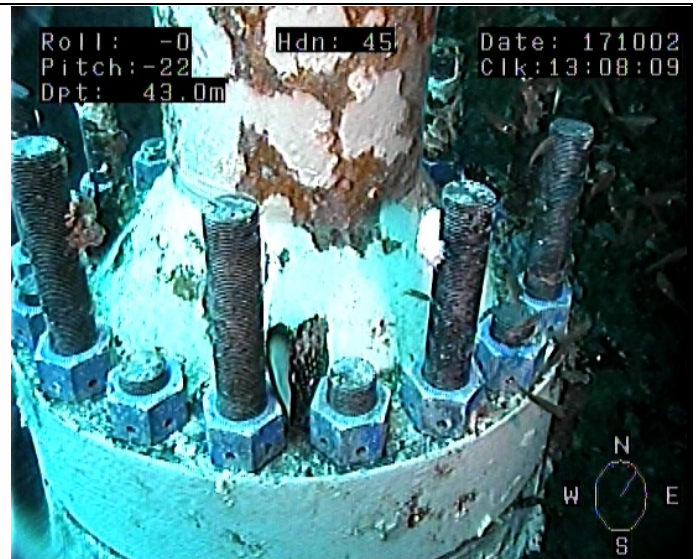
## EXAMPLES



### OTHER EXAMPLES - BEFORE AND AFTER



Flange as found



After 90 minutes cleaning



Overboard as found

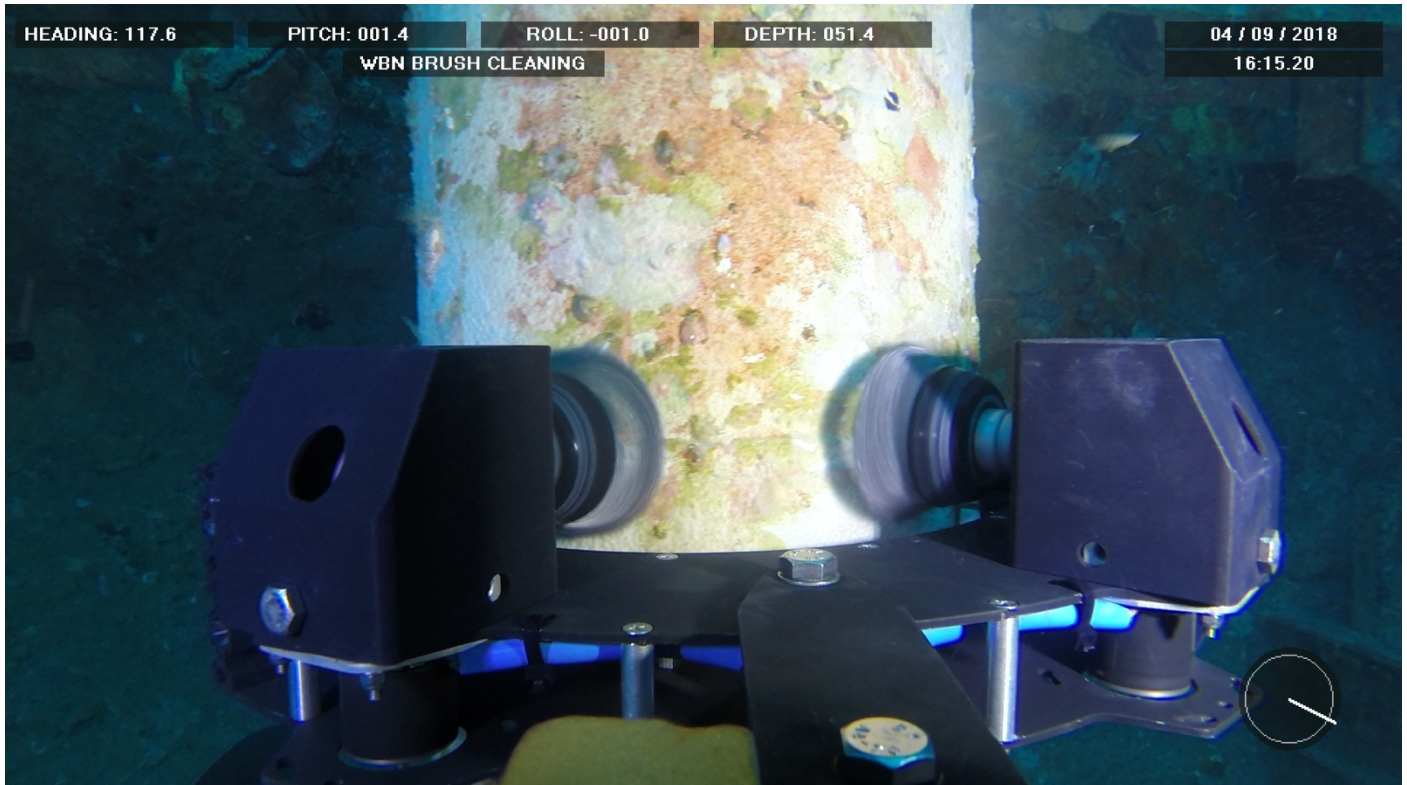


Overboard after 20 minutes cleaning

# V8 ROV CLEANING EXAMPLES



## Riser (Australia)



*Detail Cleaning with Wire Brush*



*Cleaned down the good coating prior to scanning and clamp installation*



# V8 ROV CLEANING



## EXAMPLES

Jetty Piles (Darwin, Australia)



*Cleaning a pile – poor coating adhesion and areas of corrosion evident*

## Heavy Coral



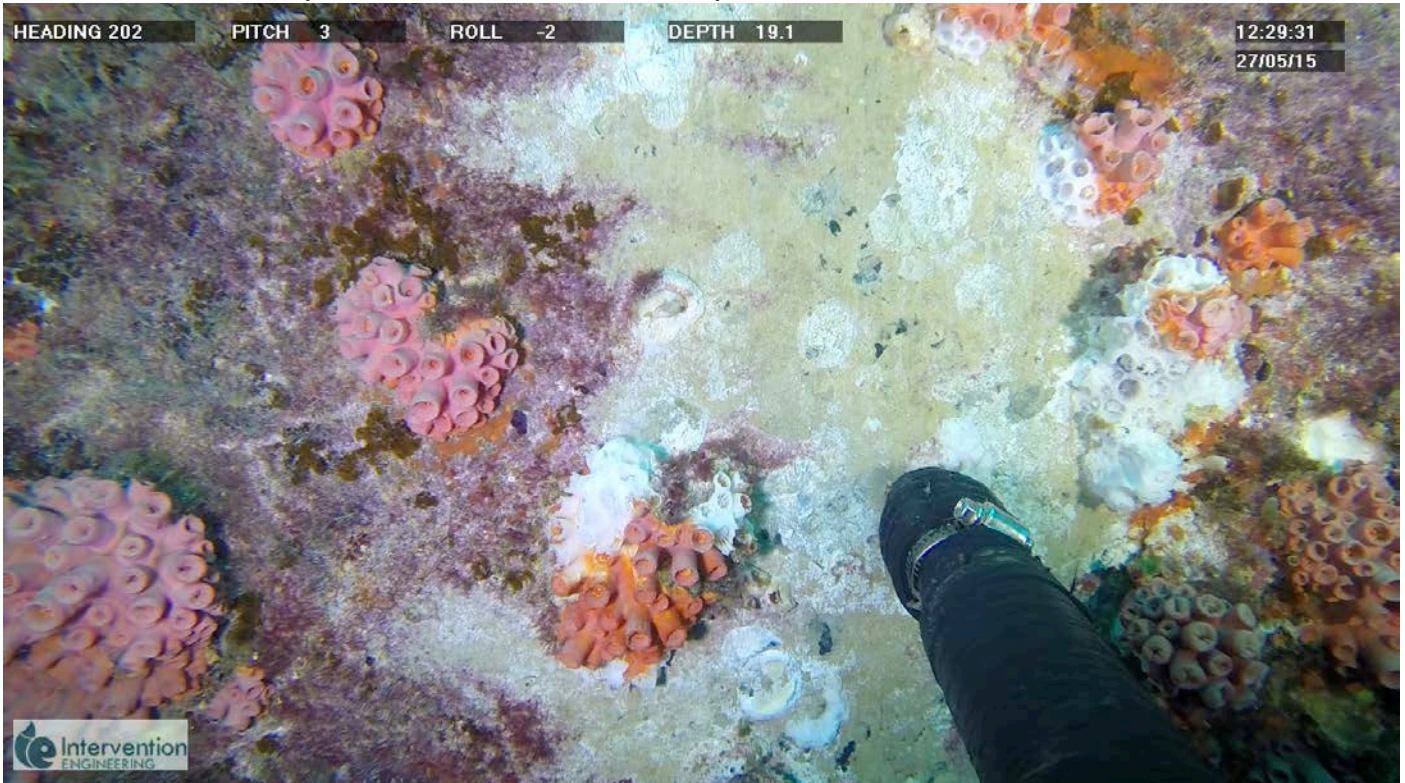
*Hacking through the heavy coral – the nozzle is 60mm wide, so coral is well over 100mm*

# V8 ROV CLEANING

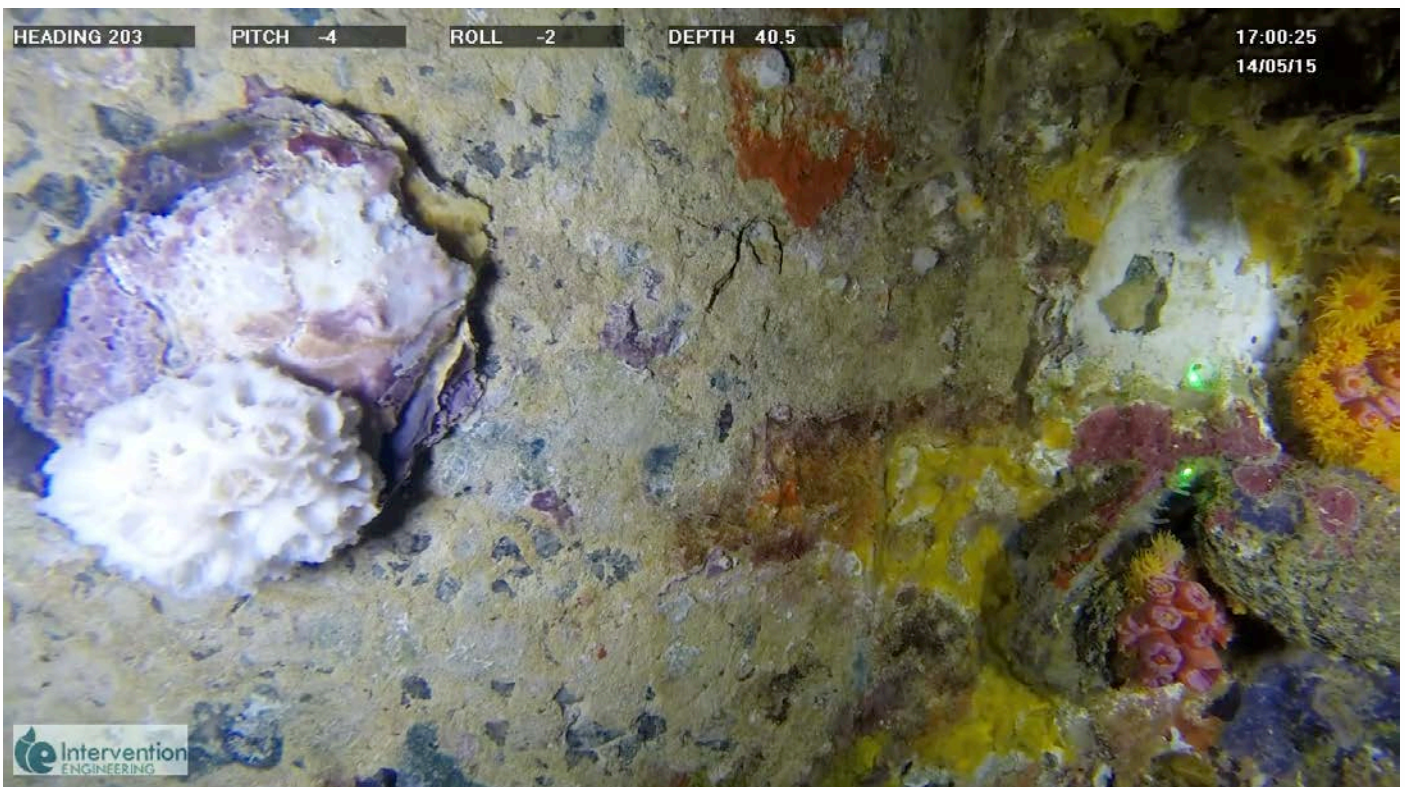


## EXAMPLES

Concrete Structure (NorthWest Shelf, Australia)



*Cleaning concrete – marine growth is well bonded typically and requires significant effort to remove*



*Close up of cleaned concrete – looking for stress cracks*